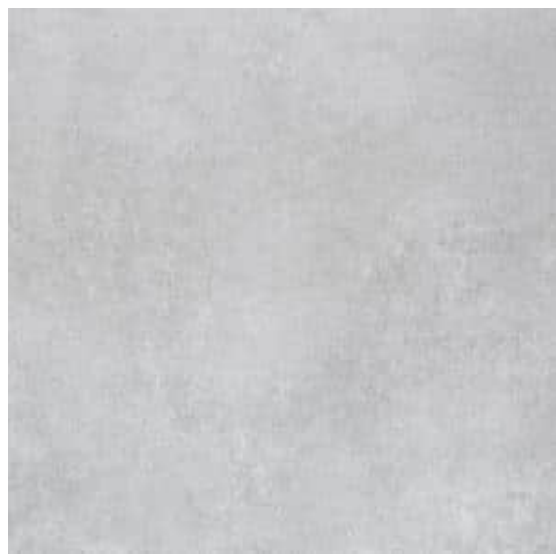




Sizes	Type	Style	Finish	Thickness	Sqft/Carton	Pieces/Box	Recommended Grout Joint
12x24	Field	Concrete	Matte	3/8"	12	6	1/8"
30x30	Field	Concrete	Matte	3/8"	18.75	3	1/8"

SAR04 TILE PERFORMANCE DATA

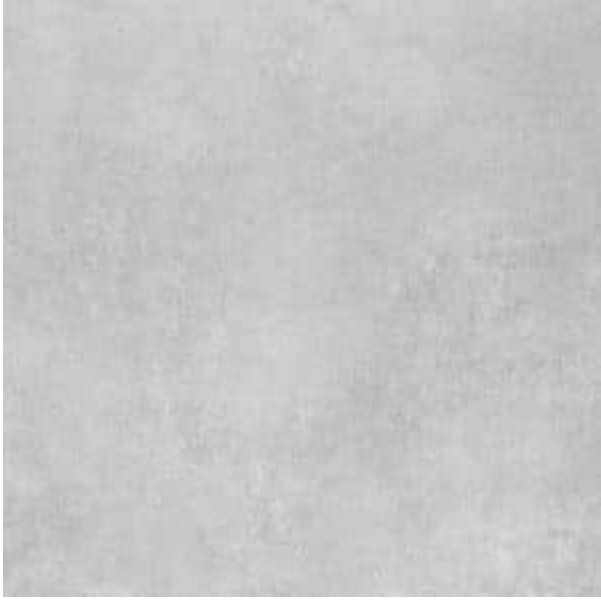
Physical Properties	Standard	Results
Slip Resistance	ANSI A326.3	0.42
Water Absorption	UNE-EN ISO 10545-3	<.5%
Breaking Strength	ISO 10545-4	>8000 N
Chemical Resistance	ISO10545-13	A
Stain Resistance	ISO10545-14	Class 5
Crazing Resistance	EN ISO10545-11	Pass



PRODUCT DESCRIPTION

[Home](#) / [Porcelain & Ceramic Tile](#) / SAR04





SAR04

\$0.00

- [Description](#)
- [Additional information](#)

STOCKED IN LINCOLN, NE

AVAILABLE COLORS

Argent

Please contact the office for availability. [402-475-1300](tel:402-475-1300)

RECOMMENDED INSTALLATIONS

Wall
Floor
Wet
Exterior

SHARE THIS LOOK



[GENERATE PDF](#)

ADDITIONAL INFORMATION

Finish	Matte
Size	12×24, 30×30
Style	Concrete

SAR04 quantity

Add to cart

SKU: SAR04

Category: [Porcelain & Ceramic Tile](#)

SAR04 AVAILABLE SIZES

Sizes	Type	Style	Finish	Thickness	Sqft/Carton	Pieces/Box	Recommended Grout Joint
12x24	Field	Concrete	Matte	3/8"	12	6	1/8"
30x30	Field	Concrete	Matte	3/8"	18.75	3	1/8"

SAR04 TILE PERFORMANCE DATA

Physical Properties	Standard	Results
Slip Resistance	ANSI A326.3	0.42
Water Absorption	UNE-EN ISO 10545-3	<.5%
Breaking Strength	ISO 10545-4	>8000 N
Chemical Resistance	ISO10545-13	A
Stain Resistance	ISO10545-14	Class 5
Crazing Resistance	EN ISO10545-11	Pass

RELATED PRODUCTS



• CEMENTONIA

\$0.00



TIMBER

\$0.00



BRICK

\$0.00