



SANTOR AVAILABLE SIZES

Sizes	Type	Style	Finish	Thickness	Sqft/Carton	Pieces/Box	Recommended Grout Joint
12x24	Porcelain	Non-Rectified	Sugar	3/8"	16	8	Min. 1/8"
18x36 (Grey, Beige Only)	Porcelain	Rectified	Sugar	3/8	13.5	3	Min. 1/8"

SANTOR TILE PERFORMANCE DATA

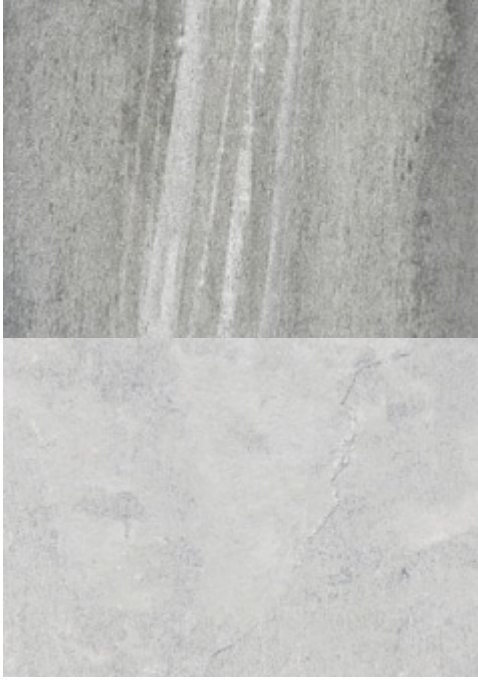
Physical Properties	Standard	Results
Ramp Test	R Value	R10
Water Absorption	ISO 10545-3	Max 0.5
Breaking Strength	ISO 10545-4	Min. 40
MOH's Hardness	EN 0	
Chemical Resistance (Acid & Bases) (Household Chemicals)	ISO 10545-13	GLB, GHB
Stain Resistance	ISO 15045-14	Class 5
Frost Damage	ISO 15045-12	Not Damaged
Surface Impact Resistance	ISO 15045-5	Not Damaged
Surface Abrasion Resistance	ISO 15045-7	P.E.I. IV
Wet Dynamic Coefficients of Friction Values	ANSI A137.1	>0.42 µD



PRODUCT DESCRIPTION

[Home](#) / [Porcelain & Ceramic Tile](#) / Santor





SANTOR

\$0.00

- [Description](#)
- [Additional information](#)

STOCKED IN LINCOLN, NE

AVAILABLE COLORS

Beige
Fume
Grey
Ice

Please contact the office for availability. [402-475-1300](tel:402-475-1300)

RECOMMENDED INSTALLATIONS

Wall
Floor
Exterior

SHARE THIS STYLE



[GENERATE PDF](#)

ADDITIONAL INFORMATION

Color	Gray, White
Material	Wood, Stone, Concrete, Decorative, 3D Wall
Material	Stone

Finish [Sugar](#)
Price \$

Santor quantity

Add to cart

SKU: santor

Categories: [Porcelain & Ceramic Tile](#), [Trade Professionals](#)

SANTOR AVAILABLE SIZES

Sizes	Type	Style	Finish Thickness	Sqft/Carton	Pieces/Box	Recommended Grout Joint
12x24	Porcelain Non-Rectified	Sugar	3/8"	16	8	Min. 1/8"
18x36 (Grey, Beige Only)	Porcelain Rectified	Sugar	3/8"	13.5	3	Min. 1/8"

SANTOR TILE PERFORMANCE DATA

Physical Properties	Standard	Results
Ramp Test	R Value	R10
Water Absorption	ISO 10545-3	Max 0.5
Breaking Strength	ISO 10545-4	Min. 40
MOH's Hardness	EN 0	
Chemical Resistance (Acid & Bases) (Household Chemicals)	ISO 10545-13	GLB, GHB
Stain Resistance	ISO 15045-14	Class 5
Frost Damage	ISO 15045-12	Not Damaged
Surface Impact Resistance	ISO 15045-5	Not Damaged
Surface Abrasion Resistance	ISO 15045-7	P.E.I. IV
Wet Dynamic Coefficients of Friction Values	ANSI A137.1	>0.42 µD

RELATED PRODUCTS



CREFOR

\$0.00



SARK STEEL

\$0.00



ACID

\$0.00