



SARKOTILE

GEO AVAILABLE SIZES

| Sizes | Type | Style | Finish | Thickness | Sqft/Carton | Pieces/Box | Recommended Grout Joint |
|------------------------------------|-----------|---------|--------|-----------|-------------|------------|-------------------------|
| 7x8 (Blanco, Carrara, Gris, Negro) | Porcelain | Hexagon | Matte | 3/8" | 11 | 35 | |
| 3.6x8.2 (Gris, Negro) | Porcelain | Chevron | Matte | 3/8" | 11 | 54 | |
| 3.6x8.2 (Blanco) | Porcelain | Chevron | Glossy | 3/8" | 11 | 54 | |

GEO HEXAGON TILE PERFORMANCE DATA

| Physical Properties | Standard | Results |
|--|-----------------|----------|
| Dynamic Coefficient of Friction | D.C.O.F. > 0.42 | ≥ 0.42 |
| Water Absorption | ISO 10545-3 | < .05% |
| Breaking Strength | ISO 10545-4 | > 1300 N |
| MOH's Hardness | EN 0 | 7 |
| Chemical Resistance (Acid & Bases) (Household Chemicals) | ISO 10545-13 | GLA |
| Stain Resistance | ISO 10545-14 | 5 |

GEO CHEVRON MATTE TILE PERFORMANCE DATA

| Physical Properties | Standard | Results |
|---------------------------------|-----------------|----------|
| Dynamic Coefficient of Friction | D.C.O.F. > 0.42 | ≥ 0.42 |
| Water Absorption | ISO 10545-3 | < 0.5% |
| Breaking Strength | ISO 10545-4 | > 1300 N |
| MOH's Hardness | EN 0 | 7 |

Physical Properties

Standard

Results

Chemical Resistance
(Acid & Bases)
(Household Chemicals)

ISO 10545-13

GLA

Stain Resistance

ISO 10545-14

5

GEO CHEVRON GLOSSY TILE PERFORMANCE DATA

Physical Properties

Standard

Results

Water Absorption

ISO 10545-3

> 10%

Breaking Strength

ISO 10545-4

> 600 N

MOH's Hardness

EN|0|

3

Chemical Resistance
(Acid & Bases)
(Household Chemicals)

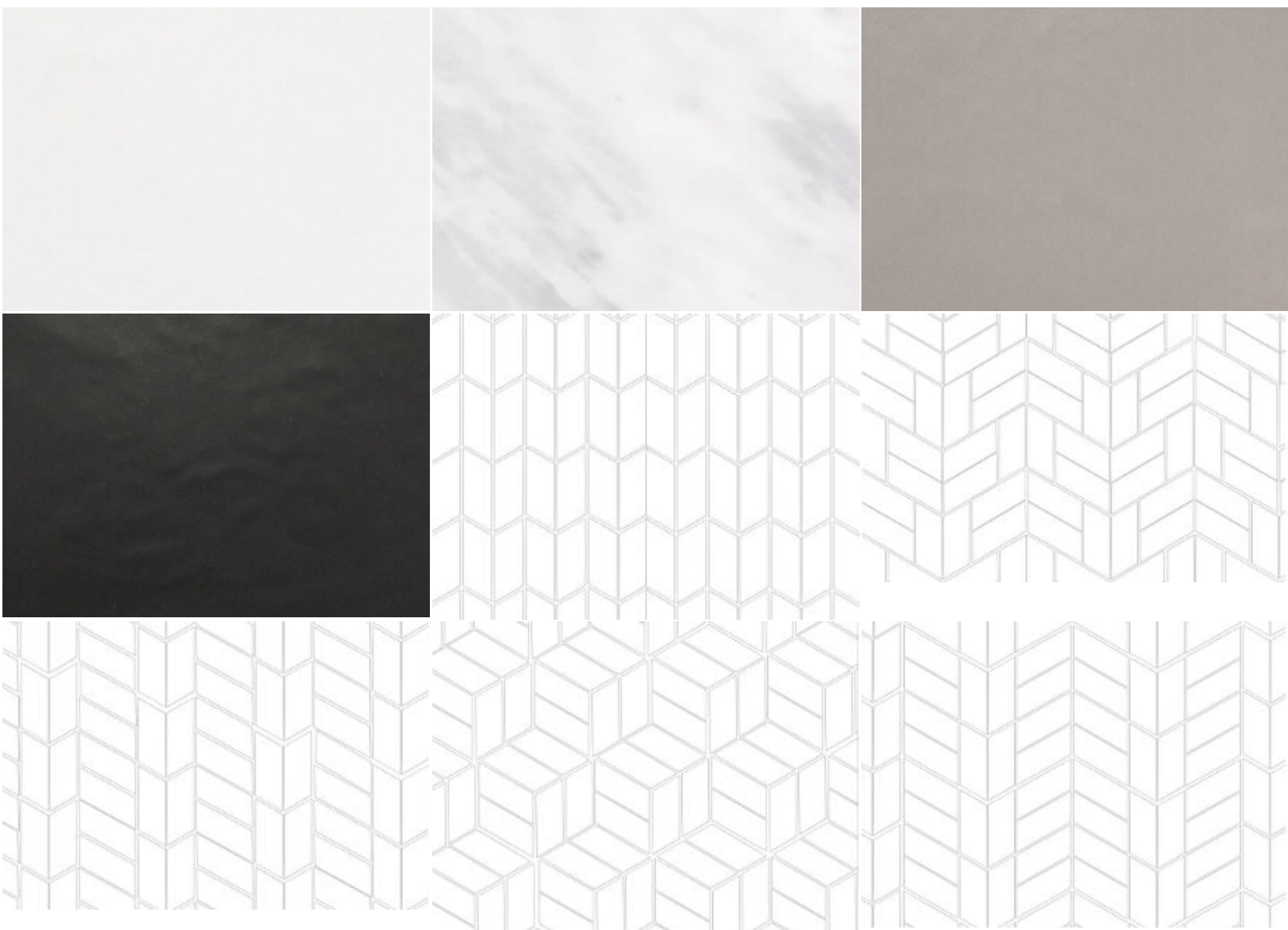
ISO 10545-13

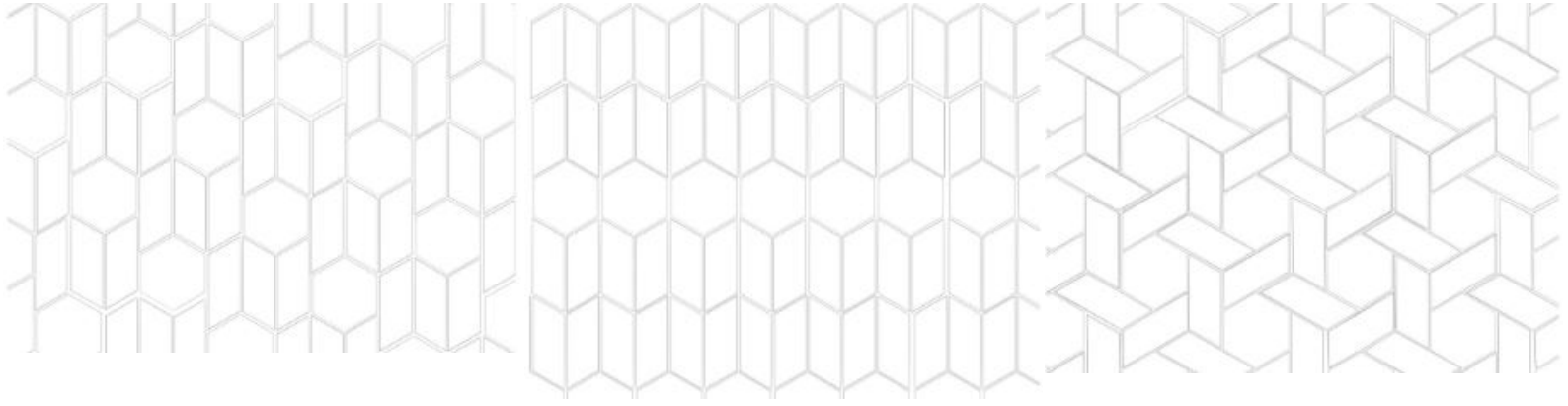
GLA
GHB
GA

Stain Resistance

ISO 10545-14

5





PRODUCT DESCRIPTION

STOCKED IN LINCOLN, NE

AVAILABLE COLORS

Blanco
Carrara
Gris
Negro

Please contact the office for availability. [402-475-1300](tel:402-475-1300)

RECOMMENDED INSTALLATIONS

Wall
Floor
Exterior

SHARE THIS STYLE

[GENERATE PDF](#)