



CREFOR AVAILABLE SIZES

Sizes	Type	Style	Finish	Thickness	Sqft/Carton	Pieces/Box	Recommended Grout Joint
12x48	Porcelain	Rectified	Matte	3/8"	12	3	Min. 1/16"
12x24 Fumo Only	Porcelain	Rectified	Matte	3/8"	12	6	Min. 1/16"

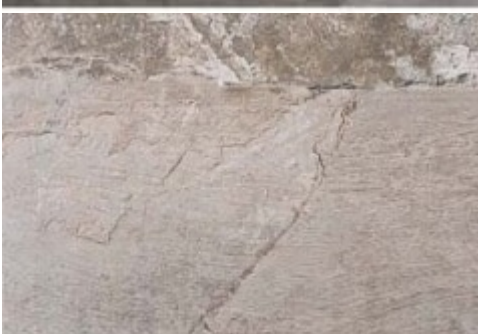
CREFOR TILE PERFORMANCE DATA

Physical Properties	Standard	Results
Dynamic Coefficient of Friction	D.C.O.F. > 0.42	> .60
Water Absorption	ISO 10545-3	$E \leq 0.5$
Breaking Strength	ISO 10545-4	> 1300 N
MOH's Hardness	EN 0	8
Chemical Resistance (Acid & Bases) (Household Chemicals)	ISO 10545-13	GHB GLB
Stain Resistance	ISO 10545-14	Complies



PRODUCT DESCRIPTION

[Home](#) / [Porcelain & Ceramic Tile](#) / Crefor



CREFOR

\$0.00

- [Description](#)
- [Additional information](#)

STOCKED IN LINCOLN, NE

AVAILABLE COLORS

Aria
Carbone
Fumo

Please contact the office for availability. [402-475-1300](tel:402-475-1300)

RECOMMENDED INSTALLATIONS

Floor
Wall
Exterior

SHARE THIS STYLE



[GENERATE PDF](#)

ADDITIONAL INFORMATION

Color	Brown , Grey , White
Material	Stone
Finish	Matte
Price	\$\$

Crefor quantity

Add to cart

SKU: crefor

Categories: [Porcelain & Ceramic Tile](#), [Trade Professionals](#)

CREFOR AVAILABLE SIZES

Sizes	Type	Style	Finish	Thickness	Sqft/Carton	Pieces/Box	Recommended Grout Joint
12x48	Porcelain	Rectified	Matte	3/8"	12	3	Min. 1/16"
12x24 Fumo Only	Porcelain	Rectified	Matte	3/8"	12	6	Min. 1/16"

CREFOR TILE PERFORMANCE DATA

Physical Properties	Standard	Results
Dynamic Coefficient of Friction	D.C.O.F. > 0.42	> .60
Water Absorption	ISO 10545-3	E ≤ 0.5
Breaking Strength	ISO 10545-4	> 1300 N
MOH's Hardness	EN 0	8

Physical Properties

Standard

Results

Chemical Resistance
(Acid & Bases)
(Household Chemicals)
Stain Resistance

ISO 10545-13

GHB
GLB

ISO 10545-14

Complies

RELATED PRODUCTS



•

TIMBER

\$0.00



•

MANDALAY

\$0.00



PULPIS

\$0.00