



CAPUA AVAILABLE SIZES

Sizes	Type	Style	Finish	Thickness	Sqft/Carton	Pieces/Box	Recommended Grout Joint
10x20	White Body	Non-Rectified	Glossy	1/4"	19.46	14	Min. 1/8"

CAPUA TILE PERFORMANCE DATA

Physical Properties	Standard	Results
Water Absorption	ISO 10545-3	16%
Breaking Strength	ISO 10545-4	600-900 N
Chemical Resistance (Acid & Bases) (Household Chemicals)	ISO 10545-13	GA GA
Stain Resistance	ISO 10545-14	5

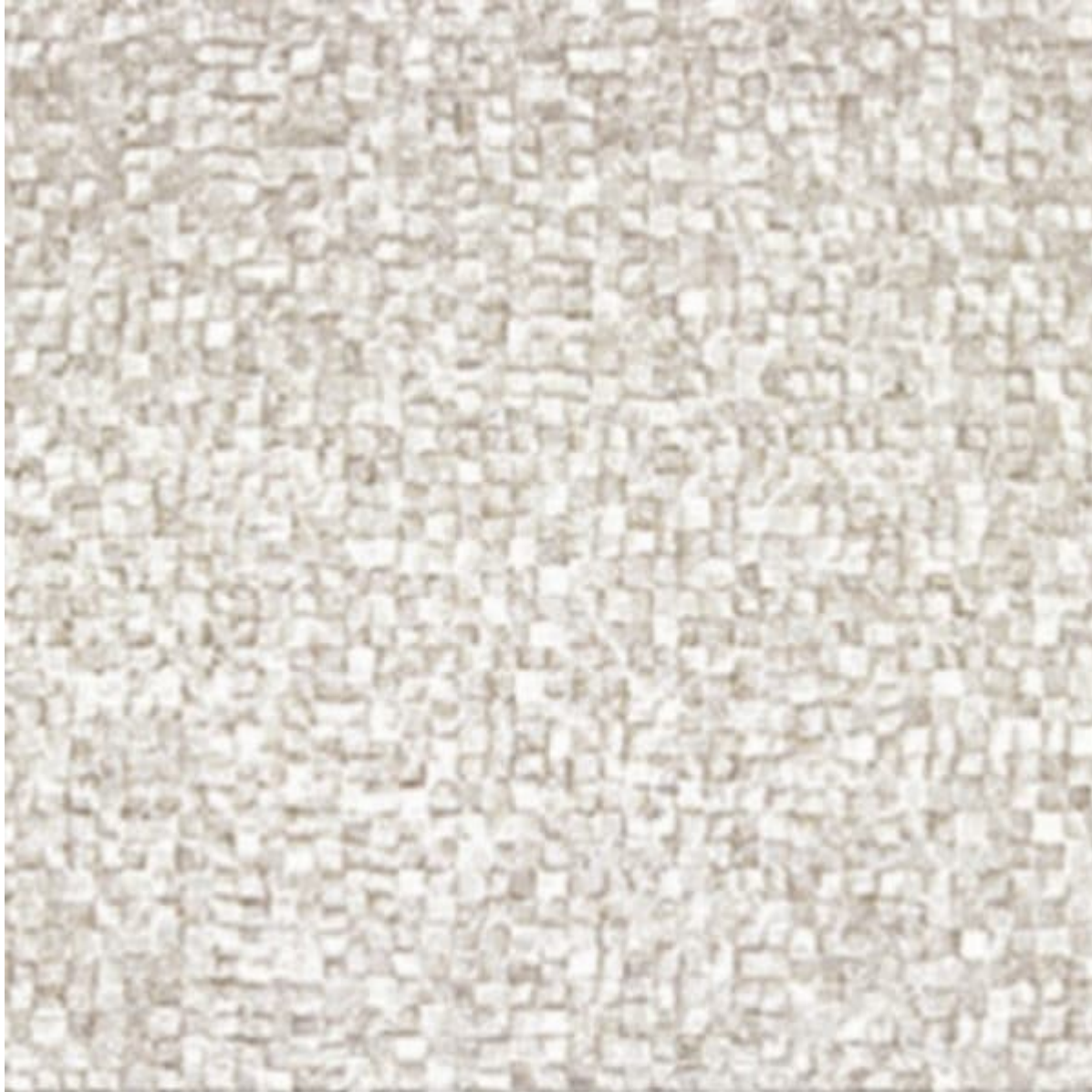


PRODUCT DESCRIPTION

[Home](#) / [Ceramic Tile](#) / Capua







CAPUA

\$0.00

- [Description](#)
- [Additional information](#)

STOCKED IN LINCOLN, NE

AVAILABLE COLORS

Blanco
Multi-Perla

Please contact the office for availability. [402-475-1300](tel:402-475-1300)

RECOMMENDED INSTALLATIONS

Wall

SHARE THIS STYLE



[GENERATE PDF](#)

ADDITIONAL INFORMATION

Color	White
Material	3D Wall , Decorative
Finish	Glossy
Price	\$

Capua quantity

Add to cart

SKU: capua

Category: [Ceramic Tile](#)

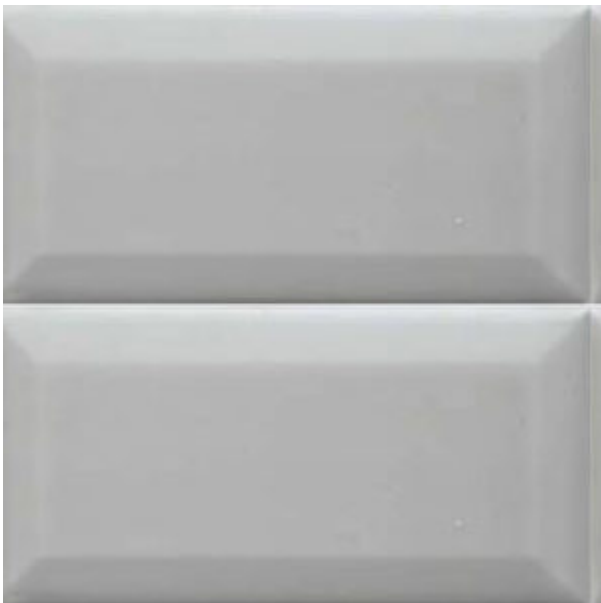
CAPUA AVAILABLE SIZES

Sizes	Type	Style	Finish	Thickness	Sqft/Carton	Pieces/Box	Recommended Grout Joint
10x20	White Body	Non-Rectified	Glossy	1/4"	19.46	14	Min. 1/8"

CAPUA TILE PERFORMANCE DATA

Physical Properties	Standard	Results
Water Absorption	ISO 10545-3	16%
Breaking Strength	ISO 10545-4	600-900 N
Chemical Resistance (Acid & Bases) (Household Chemicals)	ISO 10545-13	GA GA
Stain Resistance	ISO 10545-14	5

RELATED PRODUCTS



SUBWAY BEVEL

\$0.00



•

TULLE

\$0.00



•

FIBER

\$0.00