



Sizes	Type	Style	Finish	Thickness	Sqft/Carton	Pieces/Box	Recommended Grout Joint
12x12 Geometric Mosaic	Porcelain	Rectified	Matte	3/8"	11	11	1/8"
48x48	Porcelain	Rectified	Matte	3/8"	15.75	1	

BOGY TILE PERFORMANCE DATA

Physical Properties	Standard	Results
Dynamic Coefficient of Friction	D.C.O.F. > 0.42	>.50
Water Absorption	ISO 10545-3	<.5%
Breaking Strength	ISO 10545-4	1600-2400 N
Chemical Resistance (Acid & Bases) (Household Chemicals)	ISO 10545-13	Class A
Stain Resistance	ISO 10545-14	Class 5





PRODUCT DESCRIPTION

[Home](#) / [Porcelain & Ceramic Tile](#) / Bogy











BOGY

\$0.00

- [Description](#)
- [Additional information](#)

STOCKED IN LINCOLN, NE

AVAILABLE COLORS

Cream
Silver
Stone
White

Please contact the office for availability. [402-475-1300](tel:402-475-1300)

RECOMMENDED INSTALLATIONS

Floor
Wall
Exterior

SHARE THIS LOOK



[GENERATE PDF](#)

ADDITIONAL INFORMATION

Finish [Matte](#)
Size [48x48](#), [Geometric Mosaic](#)
Style [Stone](#)

Bogy quantity

Add to cart

SKU: bogy

Categories: [Porcelain & Ceramic Tile](#), [Trade Professionals](#)

BOGY AVAILABLE SIZES

Sizes	Type	Style	Finish	Thickness	Sqft/Carton	Pieces/Box	Recommended Grout Joint
12x12 Geometric Mosaic	Porcelain	Rectified	Matte	3/8"	11	11	1/8"
48x48	Porcelain	Rectified	Matte	3/8"	15.75	1	

BOGY TILE PERFORMANCE DATA

Physical Properties	Standard	Results
Dynamic Coefficient of Friction	D.C.O.F. > 0.42	>.50

Physical Properties

Water Absorption

ISO 10545-3

<.5%

Breaking Strength

ISO 10545-4

1600-2400 N

Chemical Resistance

(Acid & Bases)

ISO 10545-13

Class A

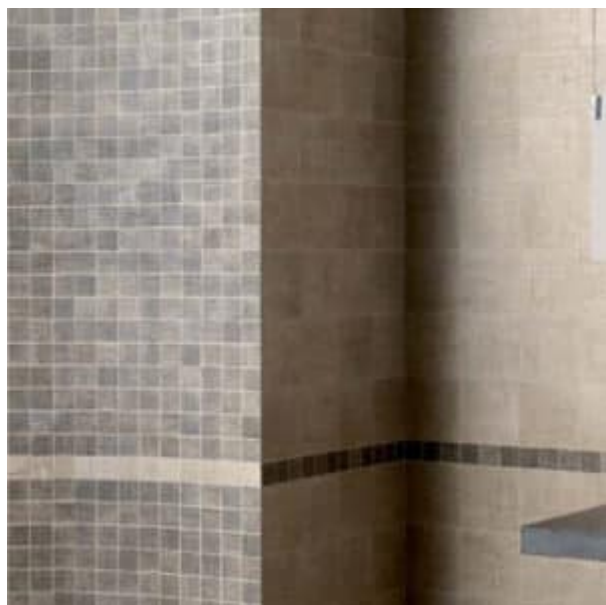
(Household Chemicals)

Stain Resistance

ISO 10545-14

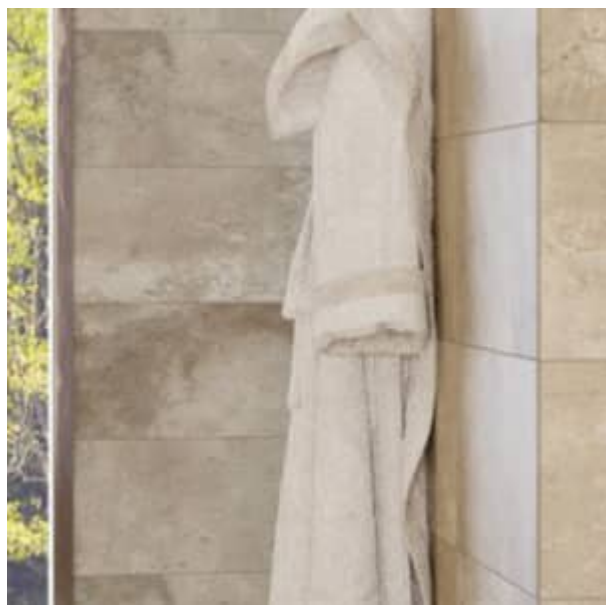
Class 5

RELATED PRODUCTS



CORCHO

\$0.00



METRO

\$0.00



•
GLACIER

\$0.00